

# STATED MEETING OF THE PRESBYTERY OF HUNTINGDON

ZOOM

September 22, 2020  
6:00 P.M.

(Join us by video or phone)  
Register with Susan Ferguson

*Offering for the Jinishian Memorial Fund*

(Send offering checks to the Presbytery office, made out to the Presbytery, with Program Code E051792)

## CONTENTS

Contents	2
Instructions for Participation	3
Announcements	4-13
Krislund	4-7
Online with kids	8-9
Jinishian Memorial Program	10-15
Docket	16-17
Consent Agenda	17
Committee on Ministry	18-19
Stated Clerk	19-20
Committee on Presbytery Life	21
Treasurer	22-29
Income and expense August	22-27
Board of Pensions Signup Due	28-29

## INSTRUCTIONS

To participate in the meeting, you must register for the meeting online. Please click on this link: <https://forms.gle/KPhkGpXRf7RsDrnp9>

You may participate via computer or smartphone (video and voice) or phone (voice only).

Click on the registration link above to fill out the questionnaire which tells us if you're a minister or a ruling elder and which congregation. Don't worry if you are a commissioned lay pastor or an officer, the stated clerk will put you in the correct category.

Registering will put you on Susan's list to receive the dial in/call in information. That will come to you via an email on the morning of September 22.

Susan will open the zoom meeting a half hour early (5:30 p.m.) so that folks can test their equipment. If you have any technical problems, or questions email Susan Ferguson at [SusanPresbytery@gmail.com](mailto:SusanPresbytery@gmail.com) or call her at 717-250-5774 between 5:30 and 6:00 PM Tuesday night. She will be glad to work with you individually to resolve your problems.

Welcome aboard to fun and safe interaction!

## Moving for Krislund

Krislund, an 800-acre camp and retreat center in scenic Centre County, Pennsylvania, is a ministry of the churches in the Presbyteries of Carlisle, Huntingdon and Northumberland. Krislund programs usually reach over 1,500 young people each summer with messages of Christ's love. Plus, Krislund has hosted over 4,000 people for retreats annually. However, this year Krislund has had no campers and very few retreat guests; thus, the camp has had almost no income while basic expenses continue.

While the financial situation at Krislund has necessitated reducing staff and curtailing programs, there is no lack of enthusiasm for the future among the remaining staff and volunteers. Sometimes going through a difficult time allows us to evaluate where we have been, make changes as necessary, and look ahead with enthusiasm. This is happening at Krislund and we are asking you to be a part of Krislund's future.

Here's how:

Make a move for Krislund and support each other!

With the hope of raising \$10,000, Huntingdon, Carlisle and Northumberland Presbyteries are sponsoring a virtual event called "Moving for Krislund." Here are two ways that you can participate:

1. You can walk, run or ride a bike. In doing so, you seek pledges for each mile you complete.
- or
2. You can help Krislund move forward by cheering on and financially supporting those who are walking, running or biking. If you know someone participating, you can contact them in person or by phone or email. Your contribution will be an important component of this event.

If you don't know of any movers, you may support a staff mover by filling out the form and putting Krislund Staff in place of the mover's name. You will be able to submit your financial support through an online portal or by sending a check to Krislund. Instruction for both methods can be found at [krislund.org/donate/moving-for-krislund](http://krislund.org/donate/moving-for-krislund).

The event will be held September 1 through October 15, 2020. All "movement" during that time can be applied to the goal. For example, if you walk a mile every day for a week or two, you can add up the miles and apply it to your total. Or you can do your activity all at once and submit that total. To participate, go to [krislund.org/movingforkrislund](http://krislund.org/movingforkrislund) to register and receive more information. There is also a link on this site to ask any questions you may have. AND....you will learn how you can win special prizes. It's always fun to put a little competition in the game! You may also call Krislund at 814-422-8878.

We hope you will participate in this fun way to help Krislund move confidently into the camp's "after-Covid" future. It has been said that the difference between a catastrophe and an opportunity is a state of mind. With God's help and great promise, those of us supporting Krislund are choosing the "opportunity" option.

We hope you will too! We thank you for your support as Krislund moves forward.



[This Photo](#) by Unknown Author is licensed under [CC BY-NC-ND](#)

# MOVING FOR KRISLUND FUNDRAISER

**WALK, RUN OR BIKE TO RAISE MONEY  
FOR KRISLUND, A CAMP AND  
RETREAT CENTER IN CENTRE  
COUNTY, PA!**

**SEPT. 1 TO OCT. 15, 2020**

Find supporters to pledge money  
based on the number of miles  
you walk, run, or bike! Go to  
[Krislund.org/MovingForKrislund](https://Krislund.org/MovingForKrislund)  
to register and donate!



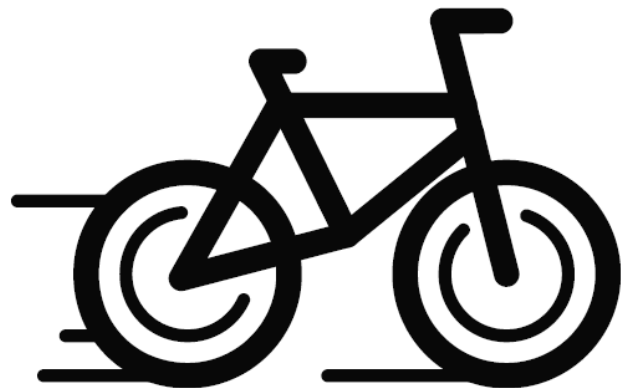
**KRISLUND IS A MINISTRY OF THE CARLISLE, HUNTINGDON, AND NORTHUMBERLAND  
PRESBYTERIES OF PENNSYLVANIA**

# MOVING FOR KRISLUND FUNDRAISER

WALK, RUN OR BIKE TO RAISE MONEY  
FOR KRISLUND, A CAMP AND  
RETREAT CENTER IN CENTRE  
COUNTY, PA!

**SEPT. 1 TO OCT. 15, 2020**

Find supporters to pledge money  
based on the number of miles  
you walk, run, or bike! Go to  
[Krislund.org/MovingForKrislund](http://Krislund.org/MovingForKrislund)  
to register and donate!



KRISLUND IS A MINISTRY OF THE CARLISLE, HUNTINGDON, AND NORTHUMBERLAND  
PRESBYTERIES OF PENNSYLVANIA

**Subject:** Interested in New Virtual Children/Youth Outreach Ministry Initiative? Need a caffeinated-boost to your creativity?



[This Photo](#) by Unknown Author is licensed under [CC BY](#)

**CONTACT:** Pat Roller email: [pat\\_roller777@yahoo.com](mailto:pat_roller777@yahoo.com) or (717) 667-6233

I have been spending a lot of time assessing all the wonderful church virtual/distance ministries across the country. The churches with established tech teams and larger churches are doing well, but I am always concerned for our mid sized and smaller churches with limited resources and shrinking memberships.

Based on my assessment, churches that are focusing their Distance Ministry on virtual Children/Youth ministries and outreach are doing the best. So I am currently piloting this new initiative in several presbyteries I serve, helping churches establish and/or expand a virtual Children/Youth/Christian Ed outreach ministry to strengthen their church, reach new online users, to connect with and develop new members.

Here's how it works. I have assembled a growing team of Presbyterian Youths, professional virtual presenters to create weekly, consistent content to help churches establish/expand a virtual Children/Youth/Christian Ed community outreach ministry to help them attract online families and children from their larger communities. Currently, this includes:

- Weekly Music Time presented by Youths.
- Weekly Story Time presented by Youths.
- Weekly Arts & Crafts Time presented by professional virtual presenters.

- Weekly Educational Game Time presented by Youths.
- Monthly Community Service Mental Health mini presentation by a licensed Psychologist.
- In the works, other virtual community services - Yoga, Tai Chi, Meditation, Baking/Cooking tips by professional virtual presenters.
- These presentations/services will all be provided by my team, as I help churches establish these programs on their own.

Key to success:

- The church must establish a small committed team of influencers, promoters to get the word out about these virtual outreach activities consistently. This team will be in direct communication with me.
- The church must develop a communication, marketing/promotion process. This includes email blasts, phone chains, text chains, group chats, social media groups and letter writing campaigns.
- The church must establish a virtual community where members and people from their larger community can engage.
- The church must collect contact information from prospects, follow up and engage new prospects consistently.
- In partnership with the church, we will set up benchmarks, collect and track data for progress.

This pilot program is free to establish for your church. If interested, let's schedule a call to discuss. Have a blessed and safe day!

Peace,  
John

--

John Fong  
Digital Disciples Ministry & Communications Consultant  
[johnfong@elizabethpresbytery.org](mailto:johnfong@elizabethpresbytery.org)



# Jinishian Memorial Program

In 2014, Pastor Ela Robertson, visited Armenia on a trip sponsored by the World Mission Initiative and hosted by the Jinishian Memorial Program. She had the opportunity to tour their many projects meeting farmers, visiting schools, attending youth leadership seminars, worshiping in new and ancient churches, and enjoying the magnificent landscapes and resilient spirit of this country that was the first Christian nation. The JMP has offices and local teams in Armenia and the diaspora with staff and flexibility to respond to immediate political, economic and natural crises. Their ongoing work funding and mentoring essential projects initiated by the people in their communities establishes long term programs for lasting relief and change.

At our September 22 meeting, Eliza Minasyan, Executive Director of the Jinishian Memorial Program of the PCUSA will be speaking to us about the status of Christians in the Near East today, and more recently about the crises in Syria and Lebanon. Under her direction JMP teams have been a consistent community force, there when people need God's presence and protection. Even though we can not meet in person, Eliza's focused, friendly and caring commitment to Christ's mission in the world will be an inspiration to us all.

The Jinishian Memorial Program (JMP) is a charitable trust that was established in 1966 through the PCUSA by the bequest of an Armenian/American Christian, Vartan H. Jinishian, in memory of his parents.

## Jinishian Memorial Program: Gratitude Report 2019

Thank you! Your generosity is helping struggling Armenian communities to thrive in seven countries. Sharing these stories online is an easy way to show friends the big picture of what a difference we can make together.



### GENEROSITY IS A BRIDGE

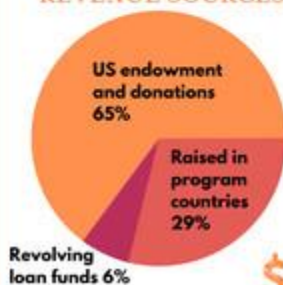
*...from poverty and despair to  
self-sufficiency and hope.*

In 2019, your combined gifts from the USA to the Jinishian Memorial Program nearly tripled, multiplying the ability of local faith and community leaders throughout Armenia and the Middle East to make a difference in the lives of the most vulnerable.

As partners, you are getting at the roots of poverty, building up farms, businesses, health and faith. Every time you give, it helps someone step into a more promising future. We are honored to share these stories of how your generosity built a bridge to hope.



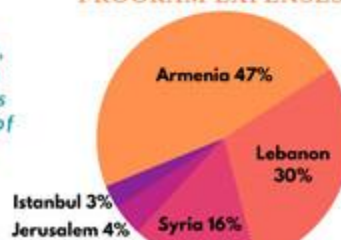
#### REVENUE SOURCES



*"As each has  
received a gift,  
use it to serve  
one another, as  
good stewards of  
God's varied  
grace."*

1 Peter 4:11

#### PROGRAM EXPENSES



**\$1.59 MILLION**

JINISHIAN MEMORIAL PROGRAM

# Lebanon

GRATITUDE REPORT

## MERCY IS A BRIDGE

*...from poverty and despair to  
self-sufficiency and hope.*

Lebanon is in crisis. People are at the mercy of decades-long corruption and the economy is near collapse. Desperate from rising unemployment and swelling refugee camps, people took to the streets in protest last fall.

With all these pressures, families are more vulnerable to illness, homelessness, broken relationships and broken spirits.

Yet because of your concern in the midst of these trials, JMP can respond with compassion to the most vulnerable—the elderly and chronically ill without health coverage, those with special needs, and refugees. We provide a web of social, medical and spiritual support that begins with listening to each person's story.

### **You helped change young girl's life**

Rita has lived on the edge of homelessness most of her young life. Although her mother picked up odd jobs, poor mental health made steady work impossible. They depended on her brother's income, but work was scarce.

**Yet this is not the end of their story because JMP was with Rita all the way. They needed more than a single intervention.**

With donor generosity, the Happy Childhood project saw Rita through rough years by providing funds for school and basic needs. When life's pressures were still too much for the young teen, Rita found herself failing and dropped out. Her self-worth was shattered.



*Just two years after dropping out and nearly homeless, Rita says, "Suddenly I'm changed. I'm passing and doing well. I am focused on my studies. I live day by day - not worrying for tomorrow."*

JMP helped Rita pick herself up again and connected her with the Teen Self-development program. Counseling and group sessions restored her confidence. She enrolled in Mesrobian Technical college and earned a diploma, putting her on a career path in hospitality management.

When she needed another chance, mercy was the bridge that sheltered a young girl against the forces of poverty and unrest raging around her. Your gifts are making a life-changing impact every day for thousands who need to know that they are loved, worthy and capable.



"THE LORD IS MERCIFUL AND GRACIOUS, SLOW TO ANGER AND ABOUNDING  
IN STEADFAST LOVE." *Psalms 103:8*

[jinashian-lb.org](http://jinashian-lb.org)

## 2019 PROGRAM IMPACT

# Thank You

\$637,000

### A TRUSTED RESOURCE IN TIME OF NEED

**2,700** BENEFICIARIES  
RECEIVED CRITICAL,  
HOLISTIC CARE

**13,000** CLIENT VISITS IN  
2019 AVERAGED  
50 EACH DAY

**222** SYRIAN REFUGEES  
WITHOUT MEDICAL  
COVERAGE RECEIVED AID

#### Health programs (76% of budget)



- dispensary services including physicians
- medication for chronic illness
- hospital and medical expense assistance
- psychiatric residential care

#### Social Services for Families and Seniors 15%



- affordable housing
- path to home ownership
- social services for families
- employment placement office
- senior stipends and home visits

#### Community development 9%



- teen self-development program
- improving women's health through education
- senior community activities
- women's committee
- small business loans
- interest-free home repair loans

*Seniors who might otherwise feel forgotten and lack medical coverage experience the warmth of community through activities, home and pastoral visits, and assistance with chronic medical needs.*



*JMP Women's Wellness programs fight heart disease and diabetes with free glucose and lipid panel testing. Social workers address threats of domestic violence, human trafficking, addiction, legal and health issues.*

#### Donors and partners

AFHIL, ARCL "Araxi Boulghourjian" Socio-Medical Center, Habitat for Humanity Lebanon, Hermes Tourism & Travel affiliated with Credit Libanais Bank, Howard Karagheusian Foundation, LiA, Mesrobian Technical College, Ministry of Health through YMCA, Municipality of Anjar, Municipality of Bourj Hammoud, St. Marc Medical and Diagnostic Center, Our Lady of Nareg Dispensary, Ten Ten Shoes, Roupen Alexanian, Bishop Georges Assadourian, Minister Avedis Guidanian, MP Hagop Pakradouni, Pascal Abounayan, Rev. & Mrs. Daniel Albarian & COA Church, Roupen Alexanian, Simon Aydenian, Me. Ziyad Baroud, Varouj Barsoumian, Ramez Bassil, Stephan Beudjekian, Elie Beyrouthy, Lucie Boyadjian, Haroutioun Chakerian, Wissam Daher, Hrayr Dantziguian, Jessy Doueihy, Jacques Ekmekji, Raja & Nora Ekmekji, Moussa Fares, Jack Ghazarian, Fadi Hatem, JMP C.D. Women's Committee, Gregoire Kaloust, George Karamanougian, Dr. Paolo Kazazian, Nar Khatchadourian, Hagop Khatcherian, Sarine Khatchikian, Hagop Loshkhajian, Hagop Lousararian, Louis Nader, Arthur Nazarian, Maro Nercessian, Vasken Panossian, Pharmacy Jack, Pharmacy Shamlan, Sam Racoubian, Aram Shanakian, Sarkis Simitian, Maya Soueid, Dr. Elie Tashjian, donations in memory of Vartouhy Tekirian, Hagop Terzian, Christine Tossounian, Lucy Tutunjan & family, Kevork Yacoubian and others

#### Mission staff

Pauline Sagherian (Lebanon country director)  
Lena Nazigian, Zepure Sdepanian, Lucie Khachadourian, Ani Aznavourian, Nanor Tashjian, Jessica Torossian, Vosgui Demirjian Abboud, Simoneh Khatchadourian, Hamesdouhie Keshishian, Dr. Ara Boladian/Dr. Haroutioun Aintablian, Dr. Raffi Elmajian, Dr. Mireille Der Yeghiayan, Rita Seropian, Maral Zadirian, Sarkis Varjabedian, Rita Vartanian

#### Beirut advisory committee

Rafi Habibian (chair), Jackine Abounayan, Talar Atèchian, PhD, Anie Boudjikanian, Karineh Sahakian Cholakian, Jacques Ekmekji, Paolo Kazazian, MD, Sarine Khatchikian, Alexander Mouradian



A view of the severely damaged port area in Beirut, Lebanon — *photo provided by Rev. Elmarie Parker*

Relief efforts are under way in Beirut to help the more than 300,000 people displaced by the Aug. 4 port explosion that is now being called among the five strongest blasts in human history.

Officials say the force of the explosion was 20% as powerful as the atomic bomb dropped by the United States on Hiroshima, Japan on Aug. 6, 1945.

The blast caused significant damage to the port of Beirut, which acts as a storehouse for important commodities imported by the government, including wheat and fuel. About 70% of the trade exchange movement between Lebanon and other countries is shipped through there.



381 Park Avenue South, Suite 617  
New York, NY 10016  
[www.pcusa.org/jinashian](http://www.pcusa.org/jinashian)

*from poverty and despair to self-sufficiency and hope*

---

August 10, 2020

Dear West Kishacoquillas Presbyterian Church,

I am writing to request your urgent support. Beirut, already in crisis, has been declared a "disaster city."

Tuesday's explosion wounded many and devastated homes in our community in Bourj Hammoud. Over 300,000 are displaced and the death toll is rising.

Our JMP team members in Lebanon are all safe, but board and family members have been injured, and every office and home has blown out windows and doors. Fortunately, the office was closed at the time of the explosion due to the recent government lock-down.

Please help us reach our goal to raise \$50,000 to bring immediate aid for medical care and repairs so people can stay safely in their homes, and to provide emergency relief in an economic crisis.

Our exceptional JMP Lebanon director, Pauline Sagherian, expresses her team's gratitude for God's care and mercy, and for yours. Pray that they may offer hope to a suffering city.

So thankful for you,

A handwritten signature in black ink, appearing to be "Eliza Minasyan", is positioned to the right of the text "So thankful for you,".

Eliza Minasyan  
Executive Director, Jinashian Memorial Program

**DOCKET FOR STATED MEETING  
THE PRESBYTERY OF HUNTINGDON  
September 22, 2020, VIA ZOOM INTERNET**

## DOCKET

Registration by online pre-registration. Call will open at 5:30 for technical issues.

- 6:00 Convene with prayer and worship  
Offering for Jinishian Memorial Program
- 6:30 Introductions: new ministers, elders and guests. Seating of corresponding members  
Eliza Minasyan, Executive Director of the Jinishian Memorial Program of the PCUSA
- 6:35 Adoption of docket [p. 16]  
Minutes review (Barry Vance)  
Minutes of June 30  
Consent agenda
- 6:45 Treasurer report (Judy Black)  
Income and expense [pp. 22-27]  
2019 audit report
- 6:55 Krislund
- 7:00 Resource Center Report (Susan Ferguson)
- 7:05 Jinishian Memorial Program
- 7:35 225<sup>th</sup> Celebration (Brian Choi)
- 7:45 Nominating Committee
- 7:50 Officer reports  
Stated Clerk (Ginny Rainey) [pp. 19-20]  
Call to a stated meeting of presbytery December 2, 2020, 2:00 p.m. via ZOOM.  
Reception of reports not listed above (COM and COPL)  
General Presbyter (Joy Kaufmann)
- 8:10 New Business
- 8:15 Announcements
- 8:20 Adjournment

# CONSENT AGENDA

**What** is a consent agenda?

A consent agenda is made up of items that may be considered routine business that need action, but are unlikely to require debate. Items for inclusion on the consent agenda must be sent out in advance with the pre-presbytery mailing and clearly marked for the consent agenda.

**Why** is a consent agenda useful?

When the consent agenda is called for, the moderator will call for a motion to approve the entire consent agenda in one vote, thus saving presbytery time for items requiring more discussion.

**BUT** What if I wish to debate, discuss, ask for clarification on some part of the consent agenda?

Simply, rise (or wave your hand at the camera) to be recognized and request that that item be removed from the consent agenda. One person's request is all that is required. No second is required, no vote need be taken to remove the item.

Do not give the explanation of your concern, need for clarification, points to be emphasized or opposed at this time. The item will come up for consideration at the time when the remainder of that committee's report is made, and you will be afforded the opportunity to speak to the motion at that time.

#####

## **Items for the September 22, 2020 Consent Agenda:**

**From COM:** Item 1, p. 18, Renewal of Lord's Supper authorization; Item 2, pp. 18-19, Contract Coalport & Irvona & Rev. Rob Bruinooge; Item 3, p. 19, 2021 Renewal Little Valley & Rev. Jim Bricker

**From Stated Clerk:** Item 2, p. 19, 2021 presbytery meetings.

**COMMITTEE ON MINISTRY**  
**September 22, 2020**  
**REPORT**

**For action:**

The Committee on Ministry recommends that presbytery approve the following motions:

1. **Renewal of authority to officiate at the Lord's Supper:** That presbytery reauthorize the following ruling elders to officiate at the Lord's Supper in our congregations until October 1, 2019: Lamarr Adamson, Richard Barkley, Martha Bloom, Judi Bookhamer, Nancy Bostian, Bill Conway, Thalia Fleetwood, Richard Ginter, Al Holtzinger, Jr., Stan Howes, Gary Jewart, Janet Kephart, Scott Kretchmar, Ken Lynch, Terry Musser, Tricia Noonan, Leanne Gill Peters, Ken Raney, Dave Shobert, and Kate Sillman.
2. **Coalport & Irvona & the Rev. Rob Bruinooge:** That presbytery approve the part-time temporary supply contract between the Rev. Robert Bruinooge and the sessions of the Coalport and Irvona Presbyterian Churches, beginning October 1, 2020, for up to twelve months. Summary of terms of service below. *Full contract and job description in Committee on Ministry minutes, August 12, 2020, pp. 43-44.*
  - a. **Time Requirements:** It is anticipated that the responsibilities of this position can be completed in approximately fifteen hours per week.
  - b. Rev. Bruinooge will preach at each church each Sunday (48 Sundays per year) and will moderate session and congregational meetings.
  - c. Pastor will be available for hospital, nursing home and home visitations and will begin serving home communion to those unable to attend worship (accompanied by an Elder or Deacon).
  - d. Work schedule will include major church holidays: Christmas Eve, Maundy Thursday, Palm Sunday, and Easter.
  - e. Pastor will be available for emergency situations, and whenever possible, for funerals and weddings as needed.
  - f. Additional hours for pastoral service above the normal expectations will be billed separately at \$15.00 per hour.

**Terms of service: (15 hours per week)**

Cash salary (\$15.00 per hour, based on 52 weeks)	\$ 11,700*
Other Items as Negotiated:	
Medical supplement allowance	\$ 1,200
<b>Effective Salary</b>	<b>\$ 12,900</b>

**Other terms of service**

Vacation: one month, including four Sundays  
Mileage reimbursed on receipt of voucher at current IRS rate.

- Use of the manse at Coalport: All utilities will be paid by the two churches.

- According to the Yoke Agreement between Coalport and Irvona Presbyterian Churches, payment of salary and benefit package will be split 30% paid by Irvona and 70% paid by Coalport.

**Severance, termination and extension of contract:** Severance, termination and extension of the contract, thirty-days notice.

3. **Lewistown Little Valley & the Rev. Jim Bricker:** That presbytery extend the contract between the Rev. James Bricker and the session of the Little Valley Presbyterian church for up to twelve months, beginning January 1, 2021. Summary of terms of service below. (*Full contract and job description in Committee on Ministry minutes, September 9, 2020, pp.xx-xx.*)

a.Rev. Bricker is a minister member in good standing of the Juniata Valley Conference of the E.L.C. A. and has the permission of his bishop to serve our congregation. As a member of a Full Communion Partner denomination, he is authorized to officiate at both sacraments and COM has appointed him moderator of session. Authorizations and appointments subject to receipt of current background checks.

**b.Summary terms of service:** The pastor is expected to preach 28 Sundays a year and provide 15 hours per month of pastoral care. He will be invited to officiate at baptisms, communions, weddings and funerals. Compensation: Cash salary of \$10,992, of which 75% is declared housing. Mileage reimbursement at the IRS business rate. Severance, termination and extension of the contract, sixty days notice.

**For information:**

1. **Mary Jo Bruinooge:** Rev. Mary Jo Bruinooge has permission to labor outside the bounds of Eastminster Presbytery and inside Huntingdon Presbytery.
2. **Rob Bruinooge & Mapleton Depot:** The contract between the session of the Mapleton Depot Presbyterian Church and the Rev. Rob Bruinooge will expire September 30. Rev. Bruinooge will continue to moderate the session.
3. **Lay preachers & lay pastors:** Annual reports
4. **Barbara Mosch:** Rev. Barbara Mosch has resigned from the Approved Pulpit Supply.

**STATED CLERK  
REPORT  
September 22, 2020**

**For action:**

1. **Additional 2020 stated meeting of presbytery:** December 2, 2020, 2:00 p.m. via ZOOM conference call.
2. **2021 Dates for stated meetings of presbytery** (all Zoom until further notice)
  - Saturday, January 30, 9:30 a.m.
  - Tuesday evening, April 20, 6:00 p.m.
  - Tuesday evening, June 29, 6:00 p.m.
  - Tuesday evening, September 28, 6:00 p.m.
  - Saturday, November 6, 9:30 a.m.

**For Information:**

1. **LaMarr Adamson commissioning:** The administrative commission appointed by COM to commission LaMarr Adamson as commissioned lay pastor of the DuBois United Presbyterian Church met at the DuBois church and by ZOOM video conference at 3:00 p.m. August 16, 2020 and duly commissioned Ruling Elder Adamson to this service. The administrative commission consisted of ruling elder Ken Raney (Pine Grove Mills), moderator; ruling elder Dave Shobert (DuBois), ruling elder Virginia Rainey (State College), Rev. Katie Hopper, Rev. Sarah Sedgwick, Rev. Al Wilson, and Rev. Jimmy Hopper. An offering was received for the Clergy Emergency Fund, which totaled \$114.00. Mr. Adamson affirmed he could uphold the Constitution of the PCUSA.
2. **Rick Woomer:** Rick Woomer has submitted his resignation as a Certified Lay Preacher in order to spend more time with his family.
3. **Candy Dannaker:** Candy Dannaker has requested honorable retirement as a lay preacher.
4. **Alice Quay:** Former Moderator Ruling Elder Alice Quay died July 28 at the age of 106. Alice was an early female elder, ordained in 1972. Sam Strohm says she opened the door to women in leadership in our presbytery and put a brick in the door to keep it open. She was lively and vivacious. She was committed to the ARC of Blair County and the Presbyterian Home in Hollidaysburg. In 1992, the entire denomination recognized her as a winner of the Women of Faith Award.

REMINDER: SESSION  
RECORDS REVIEW  
REPORTS DUE TO  
STATED CLERK  
OCTOBER !

**COMMITTEE ON PRESBYTERY LIFE  
REPORT  
September 22, 2020**

**For information:**

1. **Hunger Fund:** COPL approved a grant of \$500 from the presbytery share of Hunger Fund donations.
2. **Jinishian Memorial Fund:** COPL designated the offering from the September 22, 2020 meeting to go to the Jinishian Memorial Program. There will be a link provided for offering.
3. **Peace and Global Witness Fund:** COPL approved a grant of \$500 from the presbytery share of the Peace and Global Witness Fund to PDA for relief efforts in Beirut.
4. **Book study:** Canoeing the Mountains: Christian Leadership in Uncharted Territory by Tod Bolsinger. Joy Kaufmann led a Zoom book study on Wednesdays and Thursdays.

<b>BUDGETED INCOME</b>		<b>BUDGET 20</b>	<b>August</b>	<b>YTD</b>	<b>Outstanding PC</b>
PerCapita- (3937 @ 37.75)	\$	148,621.75		\$ -	2020
Adjusted Per Capita (4139 @ \$37.75)	\$	156,247.25	\$ 11,483.68	\$ 99,374.18	\$ 56,873.07
Per Capita 2019				\$ 5,525.75	2019
Transfer from Fulton	\$	21,937.00		\$ -	wrote off
Transfer from Contingency	\$	3,953.60		\$ -	
Fee for Service to churches	\$	1,200.00	\$ 100.00	\$ 800.00	
Partnership for the Presbytery Fund	\$	10,000.00		\$ 5,000.00	
Mission Subsidy for GP Resourcing	\$	7,000.00	\$ 583.33	\$ 4,666.64	
Mission Subsidy for Resource Center	\$	3,145.20	\$ 262.10	\$ 2,096.80	
Mission Support for Office	\$	10,509.80	\$ 875.82	\$ 7,006.56	
<b>TOTAL</b>	\$	206,367.35	\$ 13,304.93	\$ 124,469.93	
<b>BUDGETED EXPENDITURES</b>		<b>BUDGET</b>		<b>YTD</b>	<b>Under/(Over) Budget</b>
<b>PYMT PER CAPITA</b>					
GA (3937 @ 8.95)	\$	35,236.15		\$ -	
Adjusted GA (4139 @ 8.95)	\$	37,044.05		\$ 3,000.00	\$ 34,044.05
Synod (3937 @ 2.40)	\$	9,448.80		\$ -	
Adjusted Synod (4139 @ 2.40)	\$	9,933.60		\$ 2,482.20	\$ 7,451.40
<b>PRESBYTERY OFFICE PERSONNEL</b>					
GP-Salary	\$	38,761.37	\$ 3,230.12	\$ 25,840.96	\$ 12,920.41
GP-Housing	\$	12,000.00	\$ 1,000.00	\$ 8,000.00	\$ 4,000.00
GP-SECA	\$	3,883.25	\$ 323.60	\$ 2,588.80	\$ 1,294.45
GP- 403(b) employer contribution	\$	2,000.00	\$ 166.66	\$ 1,333.28	\$ 666.72
GP-Board of Pensions	\$	19,568.39	\$ 1,630.71	\$ 13,045.68	\$ 6,522.71
<b>Office Assistant</b>					
OA-Wages	\$	14,144.00	\$ 1,169.60	\$ 9,445.20	\$ 4,698.80
OA-FICA	\$	1,082.01	\$ 89.47	\$ 722.56	\$ 359.45
Benefits	\$	298.68	\$ 24.89	\$ 199.12	\$ 99.56
<b>Stated Clerk</b>					
SC Wages	\$	13,744.64	\$ 1,065.54	\$ 9,420.53	\$ 4,324.11
SC-FICA	\$	1,051.46	\$ 81.51	\$ 720.67	\$ 330.79
Benefits	\$	286.68	\$ 20.00	\$ 160.00	\$ 126.68
<b>Presbytery Treasurer</b>					
PT-Wages	\$	15,163.20	\$ 1,071.63	\$ 9,259.53	\$ 5,903.67
PT-FICA	\$	1,159.98	\$ 81.98	\$ 708.35	\$ 451.63
Benefits	\$	298.68	\$ 21.00	\$ 168.00	\$ 130.68
<b>Total Personnel</b>	\$	123,442.34	\$ 9,976.71	\$ 81,612.68	\$ 41,829.66
Audit	\$	5,835.00		\$ 4,000.00	\$ 1,835.00
Cleaning	\$	1,100.00	\$ 80.00	\$ 719.75	\$ 380.25
Computer Replacement	\$	-		\$ -	\$ -
Computer Repair/Tech support	\$	1,650.00		\$ 677.44	\$ 972.56
Equipment Maintenance Agreement	\$	150.00		\$ -	\$ 150.00
Fire companies - volunteer	\$	100.00		\$ -	\$ 100.00
GP-Annual Conferences	\$	2,000.00		\$ 135.53	\$ 1,864.47
GP-Ecumenical Activities	\$	250.00		\$ -	\$ 250.00
GP-Other	\$	150.00		\$ -	\$ 150.00
GP-Study Leave	\$	1,000.00		\$ -	\$ 1,000.00
GP - Travel	\$	4,000.00		\$ 388.42	\$ 3,611.58
GP-Discretionary Fund	\$	250.00		\$ -	\$ 250.00
Group Orders	\$	-	\$ (242.00)	\$ (262.00)	\$ 262.00
Insurance/Worker's Comp	\$	2,250.00		\$ 1,660.00	\$ 590.00
Insurance - damages due to vandalism			\$ 76.48	\$ (1,355.40)	\$ 1,355.40

BUDGETED EXPENDITURE		August	YTD	Under(Over) Budget
<b>PRESBYTERY OFFICE EXPENSES (Continued)</b>				
Internet/Website	\$ 1,900.00	\$ 174.90	\$ 1,125.87	\$ 774.13
Membership, Subscriptions, Books	\$ 300.00		\$ -	\$ 300.00
Postage	\$ 900.00	\$ 3.80	\$ 643.70	\$ 256.30
Rent	\$ 6,000.00	\$ 1,000.00	\$ 4,000.00	\$ 2,000.00
Resource Materials and web site	\$ 200.00		\$ -	\$ 200.00
Resource Supplies	\$ -		\$ -	\$ -
Staff Training	\$ 200.00		\$ -	\$ 200.00
Stated Clerk-Annual Conferences	\$ 2,000.00		\$ -	\$ 2,000.00
Supplies & Equipment	\$ 1,500.00	\$ 78.35	\$ 667.43	\$ 832.57
Telephone	\$ 1,750.00	\$ 136.32	\$ 1,202.48	\$ 547.52
Travel for Office	\$ 500.00		\$ 43.70	\$ 456.30
Utilities	\$ 4,000.00	\$ 143.68	\$ 1,844.82	\$ 2,155.18
Miscellaneous	\$ -		\$ -	\$ -
<b>Total Office</b>	<b>\$ 37,985.00</b>	<b>\$ 1,451.53</b>	<b>\$ 15,491.74</b>	<b>\$ 22,493.26</b>
<b>COMMITTEE/UMBRELLA TEAM EXPENSES</b>				
Retreats	\$ -		\$ -	\$ -
Mileage	\$ 250.00		\$ -	\$ 250.00
Materials	\$ 150.00		\$ -	\$ 150.00
Communications	\$ 150.00		\$ -	\$ 150.00
Other	\$ -		\$ 73.12	\$ (73.12)
Web site paid for until 2020			\$ -	\$ -
<b>Total Committees</b>	<b>\$ 550.00</b>	<b>\$ -</b>	<b>\$ 73.12</b>	<b>\$ 476.88</b>
<b>STATED MEETING EXPENSES</b>				
Custodian	\$ 125.00		\$ 25.00	\$ 100.00
Organist	\$ 200.00		\$ 40.00	\$ 160.00
Moderator Gift	\$ 100.00		\$ 80.99	\$ 19.01
Other			\$ 188.38	\$ (188.38)
<b>TOTAL Expenses</b>	<b>\$ 207,087.29</b>	<b>\$ 11,428.24</b>	<b>\$ 102,994.11</b>	<b>\$ 106,385.88</b>
<b>NET INCOME(LOSS)</b>		<b>\$ 1,876.69</b>	<b>\$ 21,475.82</b>	

Travel/Service donated for tax deductions

\$ -		
------	--	--

**Krislund Capital Campaign Loan**

	Beg Bal	Rec/month	Rec/Total	Balance
New Ch Planting	\$ 81,500.00		\$ 62,917.97	\$ 18,582.03
Ch Redevelop	\$ 18,500.00		\$ 18,500.00	\$ -
Ending Balance	\$ 100,000.00	\$ -	\$ 81,417.97	\$ 18,582.03

<b>LOCATION OF CASH</b>	
-------------------------	--

**August**

<b>1. First National Bank ADMIN CHECKING</b>	
Opening Balance	\$ 21,302.54
Income	\$ 13,984.78
Interest	\$ 0.40
All Disbursements	\$ (16,373.38)
Ending Balance	\$ 18,914.34

<b>YR to Date</b>	
	\$ 7,600.28
	\$ 140,411.36
	\$ 2.81
	\$ (129,100.11)
	\$ 18,914.34

<b>2. First National Bank ADMIN SAVINGS</b>	
Opening Balance	\$ 1,698.54
Income	
Interest - posted quarterly	
All Disbursements	
Ending Balance	\$ 1,698.54

<b>YR to Date</b>	
	\$ 1,698.46
	\$ -
	\$ 0.08
	\$ -
	\$ 1,698.54

For details of the following Mission funds, see attached sheet "Mission Budget".

<b>3. First National Bank MISSION CHECKING</b>	
Opening Balance	\$ 33,249.74
Income	\$ 8,476.44
Interest	\$ 0.68
All Disbursements	\$ (17,486.25)
Ending Balance	\$ 24,240.61

<b>YR to Date</b>	
	\$ 49,500.03
	\$ 98,274.50
	\$ 4.93
	\$ (123,538.85)
	\$ 24,240.61

<b>4. First National Bank MISSION SAVINGS</b>	
Opening Balance	\$ 46,311.97
Income	
Interest - posted quarterly	
All Disbursements	
Ending Balance	\$ 46,311.97

<b>YR to Date</b>	
	\$ 46,309.67
	\$ -
	\$ 2.30
	\$ -
	\$ 46,311.97

For details on the following New Covenant faccounts, see the attached sheet called "Investments".

<b>5. New Covenant Investment - BALANCED INCOME FUND</b>		<b>SHARES</b>	<b>PRICE</b>	<b>YR to Date</b>
Opening Balance	\$ 520,309.70	23,019.675	\$ 21.65	\$ 498,375.97
Deposit				\$ 1,967.51
Withdrawal				\$ (4,647.94)
Unrealized Profit/Loss	\$ 13,655.80			\$ 38,269.96
Ending Balance	\$ 533,965.50	23,145.450	\$ 23.07	\$ 533,965.50

<b>6. New Covenant Investment - BALANCED GROWTH FUND</b>		<b>SHARES</b>	<b>PRICE</b>	
Opening Balance	\$ 429,625.88	3,915.797	\$ 105.18	\$ 411,863.52
Deposit				\$ 763.97
Withdrawal				\$ -
Unrealized Profit/Loss	\$ 19,065.41			\$ 36,063.80
Ending Balance	\$ 448,691.29	3,963.704	\$ 113.20	\$ 448,691.29

7. New Covenant Investment - GROWTH FUND		SHARES	PRICE	
Opening Balance - Gloria Jean Smith Trust	\$ 494,042.22	10,812.918	\$ 44.98	\$ 486,365.05
Dividends moved into Bal Income				\$ (1,123.46)
Unrealized Profit/Loss	\$ 36,331.41			\$ 45,132.04
Ending Balance	\$ 530,373.63	10,812.918	\$ 49.05	\$ 530,373.63

8. PETTY CASH	
Opening Balance	\$ 12.98
Income	
Disbursements	
Ending Balance	\$ 12.98

YR to Date
\$ 11.53
\$ (1.90)
\$ 9.63

TOTAL

\$ 1,604,205.51

MISSION BUDGET										
	Budget	Beginning Balance	Designated Income	YTD Designated Income	Unified Income	YTD Unified	Total YTD	Monthly Expense	YTD Expenses	Aug '20 Balance
Promised from Presbytery Share of Unified										
Breezewood TS Salary	500.00	0.00		0.00		375.00	375.00		375.00	0.00
Krislund Presbytery Support	11,500.00	0.00		0.00		11,500.00	11,500.00		11,500.00	0.00
Multimedia Resource	3,145.20	0.00		0.00	262.10	2,096.80	2,096.80	262.10	2,096.80	0.00
Office of the Presbytery	10,509.80	0.00		225.00	875.82	6,781.56	7,006.56	875.82	7,006.56	0.00
Pastoral Care		1,735.79		0.00	0.00	0.00	0.00		0.00	1,735.79
GP Resourcing of Cong	7,000.00	0.00		0.00	583.33	4,666.64	4,666.64	583.33	4,666.64	0.00
Partnership with Presby Unified	10,000.00	2,904.55		4,852.75		4,852.75	4,852.75		5,000.00	2,757.30
Presbytery 55%										
General Assembly 38%		38,374.61	1,495.59	11,582.85	2,002.20	17,729.52	17,729.52	1,721.25	25,420.00	30,684.13
Synod 7%		2,426.67	246.56	1,797.18		1,797.18	1,797.18	40.70	1,872.80	1,495.59
Donor Designated										
Breezewood Truck Stop		450.00		1,525.00		1,525.00	1,525.00	462.50	1,975.00	0.00
Church Redevelopment		1,616.47		1,440.42		1,440.42	1,440.42		200.00	2,856.89
Christian Ed Programs		933.08		0.00		0.00	0.00		0.00	933.08
Gen Assembly Extra		5,181.40	1,826.10	31,393.77		31,393.77	31,393.77	4,935.90	34,749.07	1,826.10
Homes Chaplaincy		375.00		1,300.00		1,300.00	1,300.00	875.00	1,675.00	0.00
Homes Charitable Care		8,141.00	750.00	5,075.00		5,075.00	5,075.00	1,050.00	12,466.00	750.00
Homes Spring/Friends of Village		500.00	550.00	3,508.00		3,508.00	3,508.00	100.00	3,458.00	550.00
Homes Fall		734.00		35.00		35.00	35.00		769.00	0.00
Homes Capital/Special		0.00		0.00		0.00	0.00		0.00	0.00
Hunger - Presby Share		2,628.90	6.67	437.02		437.02	437.02	500.00	500.00	2,565.92
Krislund Presbytery Support		2,225.00	850.00	10,188.72		10,188.72	10,188.72	3,520.00	11,563.72	850.00
Krislund Scholarship		0.00		200.00		200.00	200.00		200.00	0.00
Krislund Special Project		3,831.85		1,260.00		1,260.00	1,260.00	1,260.00	1,260.00	3,831.85
Krislund FTF		1,135.00	450.00	1,600.00		1,600.00	1,600.00	800.00	2,285.00	450.00
Lay Pastor Training		304.76		0.00		0.00	0.00		0.00	304.76
Mission Interpreters		804.96		0.00		0.00	0.00		0.00	804.96
New Church Planting		900.00		0.00		0.00	0.00		0.00	900.00
Pahk Partnership		1,353.55	250.00	1,750.00		1,750.00	1,750.00		1,700.00	1,403.55
Phak Special Projects	3,100.00	11,850.10		150.00		150.00	150.00		1,400.00	10,600.10
Peace & GW - Presby share		6,504.25		1.75		1.75	1.75	2,000.00	2,000.00	4,506.00
Self Dev of People		500.00		0.00		0.00	0.00		0.00	500.00
Special Mission		0.00	50.00	50.00		50.00	50.00		50.00	0.00
Synod Extra		76.58		0.75		0.75	0.75		77.33	0.00
Theological Fund		0.00		2,179.00		2,179.00	2,179.00		2,179.00	0.00
Youth		0.00		0.00		0.00	0.00		0.00	0.00
Total	45,755.00	95,809.70	6,474.92	80,552.21	2,002.20	17,729.52	98,281.73	17,486.25	123,538.85	70,552.58
First National Checking		24,240.61								
First National Savings		46,311.97								
		70,552.58								

## Investments

Investments	August 2020					
	Last Month	Income Monthly	Distribution Monthly	Balance	Unrealized gain(loss)	New Covenant online reports
<b>New Covenant Growth Fund</b>						
Gloria Jean Smith Trust	\$330,205.06			\$330,205.06	\$0.00	\$330,205.06
Gloria Jean Smith Earnings (also see below)	\$163,837.16			\$163,837.16	\$36,331.41	\$200,168.57
Subtotal	\$494,042.22	\$0.00	\$0.00	\$494,042.22	\$36,331.41	\$530,373.63
<b>New Covenant Balanced Income Funds</b>						
Gloria Jean Smith Earnings (also see above)	\$168,488.14			\$168,488.14	\$4,422.06	\$172,910.20
Beulah Church Trust	\$4,000.00			\$4,000.00	\$0.00	\$4,000.00
Beulah Earnings	\$813.31			\$813.31	\$126.32	\$939.63
Centre Hills Cemetery - Goodhart Trust	\$5,000.00			\$5,000.00	\$0.00	\$5,000.00
Centre Hills Cemetery - Goodhart Earnings	\$2,350.51			\$2,350.51	\$192.91	\$2,543.42
Centre Hills Cemetery - Rearick Trust	\$40,000.00			\$40,000.00	\$0.00	\$40,000.00
Centre Hills Cemetery - Rearick Earnings	\$16,954.59			\$16,954.59	\$1,494.80	\$18,449.39
McNite Trust	\$11,500.00			\$11,500.00	\$0.00	\$11,500.00
McNite Earnings	\$2,338.31			\$2,338.31	\$363.19	\$2,701.50
Mission Partnership Trust Earnings	\$8,421.70			\$8,421.70	\$221.04	\$8,642.74
Christian Ed Grant	\$12,862.34			\$12,862.34	\$337.58	\$13,199.92
Clergy Emergency	\$8,752.18			\$8,752.18	\$229.71	\$8,981.89
Presby Revolving Loan	\$238,828.62			\$238,828.62	\$6,268.19	\$245,096.81
Subtotal	\$520,309.70	\$0.00	\$0.00	\$520,309.70	\$13,655.80	\$533,965.50
<b>New Covenant Balanced Growth Funds</b>						
Contingency	\$65,357.22			\$65,357.22	\$2,900.34	\$68,257.56
Fulton Fund	\$166,008.71			\$166,008.71	\$7,366.94	\$173,375.65
Irvine Fund	\$2,316.19			\$2,316.19	\$102.78	\$2,418.97
Seminary Candidates Fund	\$805.45			\$805.45	\$35.74	\$841.19
New Church Planting	\$150,511.87			\$150,511.87	\$6,679.23	\$157,191.10
Church Redevelopment	\$44,626.44			\$44,626.44	\$1,980.38	\$46,606.82
Subtotal	\$429,625.88	\$0.00	\$0.00	\$429,625.88	\$19,065.41	\$448,691.29
<b>TOTAL</b>	<b>\$1,443,977.80</b>	<b>\$0.00</b>	<b>\$0.00</b>	<b>\$1,443,977.80</b>	<b>\$69,052.62</b>	<b>\$1,513,030.42</b>

# Selecting benefits for 2021:DEADLINE OCTOBER 9

Employer Agreement is your annual opportunity to review, select, and change your benefits offerings for the following year. [Log on to Benefits Connect](#) from **July 20 through October 9** to make your selections and review costs for 2021. The Board of Pensions is ready to serve you and your employees with more choices and new benefits for the coming year.

## What's new for 2021

At the Board of Pensions, we have a vision to provide every employee of the Presbyterian Church (U.S.A.) with access to benefits that support wholeness, and to offer more choices to congregations and PC(USA)-affiliated employers. 2021 moves us closer to serving more employers and members with the revised Benefits Plan of the PC(USA) — which offers more choices and new benefits.

## Two benefits packages for ministers

For 2021, two benefits packages are available to support the well-being of ministers and their families:

(Contractual) **Minister's Choice**. This benefits package, new for 2021, provides important financial protection during active service and into retirement at only 10 percent of effective salary. Plus, it expands access to assistance and education programs\* now available only through Pastor's Participation, such as CREDO and Board University. Benefits include the Defined Benefit Pension Plan, the Death and Disability Plan, the Temporary Disability Plan (a new benefit for 2021), and the Employee Assistance Plan.

(Called or Contractual) **Pastor's Participation**. This comprehensive benefits package is designed to meet the healthcare and retirement needs of ministers and their families. Coverage includes PPO family medical, the Defined Benefit Pension Plan, the Retirement Savings Plan of the Presbyterian Church (U.S.A.), the Death and Disability Plan, and — new for 2021 — the Temporary Disability Plan. Employer cost is 37 percent of effective salary.

*\*Member must meet eligibility requirements.*

## New disability plans

In addition to the disability benefits offered as part of the [Death and Disability Plan](#), two new disability plans are available for 2021. These plans offer employers greater choice and the opportunity to provide this critical financial protection to more employees.



**[Temporary Disability Plan.](#)** In the event of a short-term disability, this financial protection benefit provides employees with a partial income for up to 90 days after a 14-day waiting period. This plan will be included in the Pastor's Participation and the new Minister's Choice benefits packages.



**[Long-Term Disability Plan.](#)** This benefit offers financial protection for employees with a long-term disability that extends beyond 90 days, providing them with a partial income throughout their disability. Employers may provide this plan to employees who are not enrolled in the Death and Disability Plan.

When the Long-Term Disability Plan is offered with the Temporary Disability Plan, employees are provided with comprehensive financial protection should they become unable to work.

## Expanded Term Life Plan

The [Term Life Plan](#) will offer the same low-cost coverage as the 2020 Benefits Plan with an additional feature for employers for 2021. Employers can choose to offer a fixed amount of coverage or, new for 2021, an income-based benefit amount.

No evidence of insurability is required at any time with either feature. Employers pay the full cost of Term Life Plan coverage.