



# Agape Herald

The Newsletter of the Presbytery of Huntingdon

Mission: Loved by Jesus Christ, called to love all others

[www.huntingdonpresbytery.com](http://www.huntingdonpresbytery.com)

October 2008/

November 2008

General Presbyter:

Joy Kaufmann

[joyk2@verizon.net](mailto:joyk2@verizon.net)

Treasurer :

Liz Armstrong

[Larmstrong8@verizon.net](mailto:Larmstrong8@verizon.net)

Mission Treasurer:

Joann Kimmel

[jkimmel@pennswoods.net](mailto:jkimmel@pennswoods.net)

Stated Clerk:

Virginia Rainey

[vfrailey@verizon.net](mailto:vfrailey@verizon.net)

Pastoral Care

Consultant:

Lynn Illingworth

[suelynni@verizon.net](mailto:suelynni@verizon.net)

814-234-2415

Resource Center

Coordinator:

Marie Carlson

[mariecarlson1@verizon.net](mailto:mariecarlson1@verizon.net)

Presbytery Office

Phone:

814-742-2200

Fax: 814-742-2214

## HOW ARE WE TO BE THE CHURCH?

*...the Lord appointed 70 others and sent them on ahead of him in pairs to every town and place where he himself intended to go. He said to them, "The harvest is plentiful, but the laborers are few; therefore ask the Lord of the harvest to send out laborers into his harvest. Go on your way."*

Luke 10:1-2

For years those of us in the church have assumed, much like the line from the 1980's movie, "If you build it, they will come." In other words, if we built a church building, found a half-way decent preacher and had a children's Sunday School, people would come looking for God within the walls of that building.

You have probably noticed that this doesn't always work any more. The world around us has changed, but very often we in the church haven't taken note. Many Pastor Nominating Committee members will tell me they are open to "church transformation", but in their hearts of hearts they are still secretly clinging to what is called "the attractional model". That is, people think, "If only we find the right preacher, he/she will preach really dynamic sermons and people will be attracted to our church."

Very few preachers are a Billy Graham or a Bill Coffin or a Tony Campolo, even though I've heard some fine preaching in our presbytery. It is simply the case that our culture is no longer a Christian culture, if it ever really was.

What is a model for the church that might be more appropriate for today? The scripture above gives us lots of clues. Jesus *sent* the people of faith *out* into the towns and villages

where he intended to go (that would be every place he could go!) He didn't call them into a building, and he didn't ask those who already believed he was the Way, the Truth and the Life to sit inside and pray about it. He simply sent them, with pretty clear marching orders.

If you read further in the Luke passage, say through verse 12, you discover that Jesus wanted them to travel light, accept hospitality from fellow believers and preach the same message whether they were accepted or rejected. That message was and is "The Kingdom of God is near."

How would we live if we truly believed that God's reign on earth was as near to us as the air we breathe? Would we want to be among the 70? Would we be willing to see ourselves as a people sent out into the harvest, rather than people praying that the harvest would harvest itself? This way of thinking of ourselves is called the "missional model". Our presbytery will be exploring, we hope through some of our congregations, just what it might mean for us to be missional. I'll keep you posted!

In Christ's love,  
Joy K.

### INSIDE THIS ISSUE:

<b>HOW ARE WE TO BE THE CHURCH?</b>	1
<b>STATE COLLEGE PRESBYTERIAN</b>	2
<b>WALKING THE LABYRINTH</b>	2
<b>SPREAD THE WARMTH</b>	3
<b>EQUIPPING PASTORS LEADERSHIP EVENTS</b>	3
<b>"BUILDING 'JO'S WELL"</b>	4
<b>225TH ANNIVERSARY MCVEYTOWN PRESBYTERIAN CHURCH</b>	4
<b>SAWATDEE FROM THE POTTER FAMILY IN THAILAND</b>	5
<b>CALENDAR</b>	6
<b>PRAYER CALENDAR</b>	6
<b>WEST KISH KRISLUND</b>	6
<b>PRESBYTERIAN HOMES</b>	7
<b>AGAPE HERALD EDITORIAL AND PROD. TEAM</b>	8

## STATE COLLEGE PRESBYTERIAN CHURCH BUILDS A HOUSE!

The State College Presbyterian Church has teamed up with Habitat for Humanity to build a House!

State College Presby is sponsoring the complete build of a single family home just off North Atherton in State College. The church raised over \$60,000 through donations (big



Chuck Lowry, Blair Malcom, Josh Dasal, John McConnell, Phil Tometich



From 7/10/8. windows in, siding going up, rough wiring done.

and small!) and a special House Sing concert to provide all the materials needed for the house. Every week (W thru Sat) from mid

June until mid fall, teams of SCPC members and friends are providing the labor necessary to get the house built. The homeowners work side by side with church crews to contribute to the sweat equity portion of their house payment. It has been an amazing experience!

Submitted By: Kim Hunsiker



Jessica & Casey Hovick

## WALKING THE LABYRINTH

During the month of July, Pastor Doug Friant led four sessions on "Spiritual Discernment." In Webster's Dictionary, discernment means: "to perceive by sight or some other sense or by intellect; to comprehend clearly." In order to achieve the understanding of spiritual discernment, we were directed to journal what happened each day and how we felt God was present in that day. He then asked us to examine anything we felt was significant.

The next week we read the Word of God. "Lectio Divina" is the art of reading as we allow the Word to nourish us as words are read - not for information, but rather, for transformation.

The third week we listened to music as we walked and prayed in the sanctuary. Pastor Doug also set up the big screen to display a series of awesome pictures, we were encouraged to stop and listen, look at the pictures, then contemplate how God might be speaking to us on our journey through the church.

At the last week's session, we walked the labyrinth, a large canvas printed with many circular paths leading you to the center, as well as paths leading you out again. The labyrinth is an ancient Christian spiritual practice; it is a tool for prayer, insight and transformation. There are no set rules for how an individual uses it.

Pastor Doug borrowed the portable labyrinth from East Liberty Presbyterian Church in Pittsburgh. This one is considered



small in comparison to the church's permanent labyrinths, but still required moving most of the furniture out of the lounge to spread the canvas labyrinth out on the floor.

When we entered, music was playing softly and candles flickered around the room. The rest was up to each of us. We could center our walk on silent reflection, prayer, meditation, or even use it as a path into our futures.

For me, walking the labyrinth was the most focused prayer I believe I have ever experienced. To me the paths were a reflection of my life and the turns were significant

events in my life, all leading me to the center where God was waiting for me. I felt his ever present power and his guidance out of the labyrinth, leading me to the next stage of my life and holding my hand while finding my way. It was a very powerful experience.

If you get a chance to visit the East Liberty Presbyterian Church or if the labyrinth ever finds its way back to the Bedford Presbyterian Church, I encourage you to try it. I never dreamed it would be such an intense journey of spiritual discernment.

Submitted by:  
Shirley Stuby, participant

## SPREAD THE WARMTH SHARING GOD'S COMFORT WITH THE PEOPLE OF IRAQ

The congregation of the Upper Spruce Creek Presbyterian Church (USCPC) in Pennsylvania Furnace is celebrating. This year, 2008, marks the 150th anniversary of the current church building. People from the Valley and beyond have been worshipping in this sanctuary since 1858.

As part of a year of commemoration and outreach, church members have devoted their creative efforts to the Spread the Warmth project—with a goal of knitting or crocheting 150 prayer shawls to be distributed to Iraqis.

Prayer shawls have been made for centuries by caring people who wish to give solace to those in need of comfort. A shawl may be a welcome wrap

to someone facing surgery. Enfolding oneself in a shawl may ease the pain of grieving. A shawl can help one focus when praying.

John Diller, pastor of the USCPC is soon to be deployed to Iraq as chaplain to the 2-112th Infantry battalion, which has armories in Altoona and Tyrone. Pastor Diller will carry the prayer shawls to Iraq where they will be given to Iraqi families.

As the anniversary year draws to a close, prayer shawls will decorate the church sanctuary. The congregation will dedicate the shawls at the Christmas Eve Candlelight service.

The USCPC invites anyone interested in contributing to this project to contact Elder Peggy Kendall at (814) 238-7875 or [w\\_kendall@comcast.net](mailto:w_kendall@comcast.net). Elder Kendall will supply further information, provide patterns, and accept delivery of completed shawls.

**Contact: Jackie Ribby**  
**Phone: 814-632-5617**  
**E-mail: [jsr5@psu.edu](mailto:jsr5@psu.edu)**



Standing against a backdrop of completed prayer shawls are, left to right, Erin Garthe, Mary Brown, Pastor John Diller.

### SPREAD THE WARMTH MINISTRY THE UPPER SPRUCE CREEK CHURCH

There is still time to knit a prayer shawl for the Iraqi women. The shawls will be dedicated Christmas Eve and will go with our minister, 1st Lt. Chaplain John Diller, when he leaves for Iraq the first of the year. I am the contact person. If you need directions, I will send them to you. When you have finished knitting let me know, and I will make arrangements to pick them up.

Thanks to all who are already knitting or crocheting or who have finished. Blessings on you. Peggy Kendall email [w\\_kendall@comcast.net](mailto:w_kendall@comcast.net), phone (814) 238-7875.

### EQUIPPING PASTORS LEADERSHIP EVENTS

Training Events Offered by:

The Board of Pensions and Beaver-Butler Presbytery; Huntingdon Presbytery; Washington Presbytery, Pittsburgh Presbytery, Shenango Presbytery, Lake Erie Presbytery; Redstone Presbytery; and Kiskiminetas Presbytery.

#### 1. LEADERSHIP SKILLS

September 25, 2008 (12:00 noon) through  
September 26, 2008 (4:00 p.m.)  
Crestfield Camp & Conference Center  
[www.crestfield.net](http://www.crestfield.net) 724-794-4022

#### 2. ORGANIZATIONAL SKILLS

November 20, 2008 (12:00 noon) through  
November 21, 2008 (4:00 p.m.)  
Antiochian Village  
[www.antiochianvillage.org](http://www.antiochianvillage.org) 724-238-3677

#### 3. PERSONAL CHARACTER

February 12, 2009 (12:00 noon) through  
February 13, 2009 (4:00 p.m.)  
Antiochian Village  
[www.antiochianvillage.org](http://www.antiochianvillage.org) 724-238-3677

#### 4. RELATIONSHIP SKILLS

April 23, 2009 (12:00 noon) through  
April 24, 2009 (4:00 p.m.)  
Crestfield Camp & Conference Center  
[www.crestfield.net](http://www.crestfield.net) 724-794-4022

Cost per each event is \$40.00 plus transportation (Includes overnight accommodations & three meals)  
Make Checks Payable: Beaver-Butler Presbytery  
Mail: P.O. Box 279, Zelenople, PA 16063  
Attn.: Barbara Paff

For more information and registration form, visit the Huntingdon Presbytery website at [www.huntingdonpresbytery.com](http://www.huntingdonpresbytery.com).

## “BUILDING ‘JO’S WELL”

## PRESBYTERIAN WOMEN RAISE FUNDS TO HONOR “LATE COLUMNIST’S” LOVE FOR MISSIONS



**JOSEPHINE B. McMEEN**

By Becky Weikert  
“Daily News” Staff  
Writer

From her numerous radio interviews and newspaper columns to stories of her worldly travels and community pride, the late Josephine Biddle McMeen left many contributions and memories to

Huntingdon and its residents.

“This was a community she lived in, worked in, promoted and loved,” said Sue McElwee, a member of the Huntingdon Presbyterian Church (HPC) Presbyterian Women (PW).

McMeen was also a member of the Presbyterian Women and, as members discovered from her obituary in *The Daily News* Sept 17, 2007, it was her request that memorial contributions be left to the organization in her memory.

With the money, PW members unanimously decided they wanted to honor McMeen’s memory through foreign missions.

“We knew how much she loved foreign missions, which was something she learned from her mother,” said PW moderator Nancy Taylor. She recalled McMeen’s stories from childhood, where she would tell of her family hosting missions from the church. “She was involved with foreign missions all her life.” She also traveled extensively, visiting mission destinations.

With all the people McMeen had touched in her community, the women were expecting a large sum and had hopes of building a school in India. Unfortunately, a much smaller amount was collected than anticipated. A rummage sale was held to add to the figure; however, the group seemed stuck at a certain amount.

“When the money was not what we expected, we realized our dreams of a school were not there, but we thought we could build a well - Jo’s well,” said Taylor.

The PW members learned from HPC pastor Stanley Bhaskar, a native of India, that many villages have no drinking water. In many cases, the quality of the available water is poor and if it is safe to consume, it must be purchased.

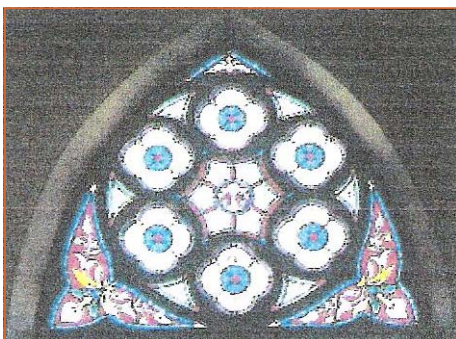
The idea of a well seemed to help the funding “drought” the PW members were experiencing. Two significant donations were collected through the church and put the total just over \$3000, but the women rejoiced when approached by an anonymous donor. “We received an offer from an anonymous donor that he will match up to \$2500 that is collected between now and Nov. 1,” said Taylor. “If we can raise that amount, we will have \$5000 to put toward this project.”

To contribute to the Jo’s Well project, checks may be made to Huntingdon Presbyterian Church with the memo marked “Jo’s Well,” and mailed to Huntingdon Presbyterian Church, 508 Mifflin St., Huntingdon, PA 16652. For more information on the project or questions about contributions, please call moderator Nancy R. Taylor at (814)643-2796; or Pastor Bhaskar at (814)643-1302 or (814)643-1826. Funds will be collected until Nov. 1.

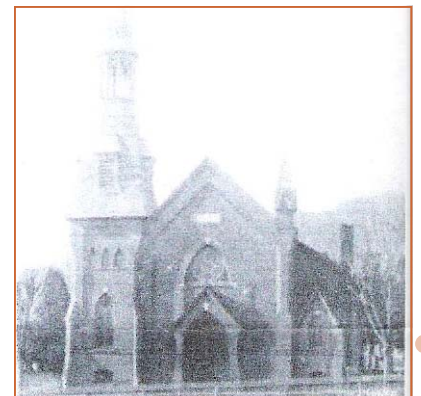
“Help us remember Jo by helping others,” said Taylor. “This is a chance for the community to respond and remember a wonderful person.”

Submitted by:  
Nancy R. Taylor

SINCE THIS ARTICLE RAN  
ON AUGUST 16, 2008,  
THE ANONYMOUS  
DONOR HAS RAISED THE  
MATCHING DOLLARS TO  
\$4000!



YOU ARE CORDIALLY INVITED TO ATTEND  
THE 225TH ANNIVERSARY CELEBRATION  
OF THE McVEY TOWN PRESBYTERIAN  
CHURCH ON  
SUNDAY, OCTOBER 12, 2008  
AT 10:00 AM TO INCLUDE  
CHORAL SELECTIONS AND HISTORICAL  
DRAMAS  
LUNCHEON WILL FOLLOW  
IN THE FELLOWSHIP HALL



## SAWATDEE FROM THE POTTER FAMILY IN THAILAND

Greetings from Lance, Debbie, Elizabeth, Riley, Jenae, and Callie Potter. We are the Huntingdon Presbytery's new mission interpreters in Chiang Mai, Thailand. Lance is the new principal at Chiang Mai International School, a school owned and operated by the Church of Christ in Thailand (CCT). The Presbyterian Church (USA) has long operated in Thailand under the auspices of the CCT. We arrived safely in Chiang Mai, Thailand on July 24th. The journey had its trying moments, but at the end of it Deb looked at Lance and said, "Well, that wasn't nearly as bad as it could have been." Thanks to all of you who had us covered with prayer on our journey.

As we have lived and taught in Chiang Mai before, it has been great to see old friends and we feel as if we're being sincerely welcomed back. The Thai director of the school even thanked God for Lance's presence, in Lance's presence, after an initial meeting with the school leadership team. Lance began working just about as soon as we arrived and has had plenty to do. Two new teachers have already resigned, unable to accept the Christian nature of the school. So now he is looking for a fabulous HS earth science and physics teacher and also a Spanish teacher that is fantastic.

Lance and Debbie and the girls are busy with the same things that most folks, wherever they live, are busy with. So let us share some things that are different. We are in full swing in the rainy season here. We have lots of rain and lots of mosquitoes. We're doing our best to stay away from the mosquitoes and manage to put bug repellent on all of us most mornings. Each time that rain is approaching, we are warned by howling wind and ominous clouds. Then, from one moment to the next, the pounding rain comes. In a short storm we can gather more than an inch of rain and have instant puddles all over town, including a mini mud swamp in our front yard. Thai food is very cheap to buy and western food is very expensive to make, so we eat out or "glap bahn" (take home) food more often than we would at home. Now if we could just get more than just Elizabeth to eat it.

Deb and Lance are studying Thai, not as much as they should, but enough for them to be making progress. Elizabeth and Riley are both at CMIS (with their Daddy) and have old friends of ours as teachers. Elizabeth can sing the Thai National Anthem (in Thai), Riley is learning the art of Thai dancing, and Jenae and Callie are picking up Thai from our multilingual house helper/nanny. There are a couple of affordable swimming pools we can use nearby and a nice resort just up the road and for a few dollars we can enjoy the swimming pools, bike trails, and sculptured gardens.

Our home came "furnished", so we've had to spend some time and money getting dressers, more beds, bookshelves, a kitchen cupboard, desks, a sofa and chair set, and the like. An afternoon of shopping can entail anything from a store similar to Circuit City to buy a DVD player for close to \$100 and a trip to the outdoor market to buy a bunch of orchids for less than \$1. We're still in the process of setting up our home and trying to buy sheets. A five-piece sheet set includes a fitted sheet, two standard pillowcases, and two bolster (long tube-like) pillowcases, but no top sheet. Go figure. As Lance's Thai boss says when things aren't quite the way they should be, "this is Thailand." Shopping can certainly add to the culture shock and stress level. Thankfully, most of the shopping is done now.

We appreciate your thoughts and prayers. Don't stop, we need them every day. If you'd like to support us in prayer please pray that Lance shows compassion and discernment with the teachers, parents and students, that wonderful teaching replacements with a heart for Christ would be seeking employment, and that he would be able to keep reasonable work hours. Please pray that Debbie would be able to accomplish many things in the morning hours including learning about fundraising and how to bring more money to the teachers and missionary families at CMIS, and that she would be free to play with her kids after preschool and regular school. Please pray for our children that they would be successful in making good friends; that Elizabeth and Riley would continue to thrive and build good relationships, that Jenae would allow some school children into her heart as she is especially vulnerable right now and feels that she has no friends at her preschool. There are some very friendly children who are making an effort to befriend her, but as yet she is unresponsive to their offers. Callie is doing well with friends and preschool, but please pray that she would show more reasonable responses several octaves lower and decibels quieter than her current ones.

We thank State College Presbyterian Church for its generous contribution to our travel costs and individuals and other churches for their monetary gifts. Your donations have been very helpful with extra expenses. Without that help, we would have been in a real bind here from day one.

If you would like to contribute financially, please put a check payable to the Huntingdon Presbytery with "Mission Interpreters: Lance/Deb Potter" on the memo line. Donations may be placed in the offering plate, left at your church office or mailed to: Liz Armstrong, 323 Main St., Bellwood, PA 16617.

Our contact information is: Lance and Debbie Potter, c/o CMIS, PO Box 38, 13 Chetupon Road, Chiang Mai, 50000 Thailand. Email is [deblanceplus3@yahoo.com](mailto:deblanceplus3@yahoo.com).

## Presbytery Calendar

### OCTOBER

- Oct. 1** 9:30am - Quarterly Staff meeting at Presbytery Offices  
3:00pm – Nominating Committee meeting at Presbytery Offices
- Oct. 4** 9:30am - CLP Training at Bellwood Church “Confessions”  
Krislund Fall Workday
- Oct. 7** 9:30am - Session Records Review at various locations  
7:00pm – Session Records Review make-up at Presbytery Offices
- Oct. 9** 9:30am – Discipleship Umbrella Team (DUT) at Pine Grove Mills Church
- Oct. 12** 2-4:00pm – Introduction to Lay Pastor Training at Osceola Mills Church
- Oct. 14** 9:30am – Session Records Review make-up at Pine Grove Mills Church  
1:30pm - Administrative Umbrella Team (AUT) at Presbytery Offices
- Oct. 15-16** Noon – EP Forum in Lewisburg, PA
- Oct. 16-17** Noon – Synod Meeting in Lewisburg, PA
- Oct. 17-18** Noon – Synod seminar “Ms. Discernment Meets Mr. Roberts”
- Oct. 21** 11:00am – Committee on Preparation for Ministry meeting at Presbytery Offices  
1pm- Committee on Ministry (COM) meeting at Presbytery Offices
- Oct. 23** 1pm-Leadership Umbrella Team meeting at Presbytery Offices
- Oct. 28** 1pm - Council meeting at Presbytery Offices

### NOVEMBER

- Nov. 2** 2-4:00pm – Introduction to Lay Pastor Training at Mt. Union Church
- Nov. 9** 3-5:00pm- Steve Cort’s Thank You Open House at Krislund
- Nov. 11** Presbytery Offices closed for Veterans Day
- Nov. 12** 9:30 – Staff meeting at Presbytery Offices
- Nov. 14** Agape Herald article submission deadline
- Nov. 16** 4:00pm-Rev. Jim Thomas’ Installation at Lewistown Church
- Nov. 18** 9:30am – Presbytery Meeting at Providence Church in Altoona
- Nov. 27&28** Presbytery Offices closed for Thanksgiving

### DECEMBER

- Dec. 2** 1:00pm – Committee on Ministry (COM) at Presbytery Offices
- Dec. 3** 4:00pm – Personnel Committee Meeting at Presbytery Offices
- Dec. 9** 1:30pm – Administrative Umbrella Team (AUT) meeting at Presbytery Offices
- Dec. 10** 9:30am – Quarterly staff meeting and lunch
- Dec. 24&25** Presbytery Offices Closed for Christmas

## Help Wanted

Part-time Choir Director: for large adult choir and an emerging children's choir, with interest in wide range of music, classics to contemporary, including masterworks. Send resume, including educational background, work history and experience and references (including contact information), as well as a statement of your philosophy of music ministry, to Rick Schawe, Search Committee Chairperson, Huntingdon Presbyterian Church, 508 Mifflin St., Huntingdon, PA 16652. Denomination requires background check.

## Prayer Request Calendar

- |             |   |
|-------------|---|
| <b>Oct</b>  | <b>2008</b>                                       |
|             | <b>Camp &amp; Conference Committee</b>            |
| <b>5</b>    | Tammy Colwell,<br>Chairperson                     |
|             | <b>Discipleship Umbrella Team</b>                 |
| <b>12</b>   | Rev. Ernie Walls,<br>Chairperson                  |
|             | <b>Krislund Camp &amp; Conference Center</b>      |
| <b>19</b>   | Stephen Cort,<br>Camp Administrator               |
|             | <b>Leadership Umbrella Team</b>                   |
| <b>26</b>   | Rev. Chuck Monts,<br>Chairperson                  |
| <b>Sept</b> | <b>2008</b>                                       |
|             | <b>Presbyterian Homes, Inc. (PHI)</b>             |
| <b>2</b>    | Steve Proctor, CEO                                |
|             | <b>Hollidaysburg Presbyterian Home</b>            |
| <b>9</b>    | Debra Larkin,<br>Executive Director               |
|             | <b>Windy Hill Village</b>                         |
| <b>16</b>   | Steve Diffenderfer,<br>Interim Executive Director |
|             | <b>Woodland Retirement Center</b>                 |
| <b>23</b>   | Kathy Johnson,<br>Executive Director              |
|             | <b>Westminister Woods</b>                         |
| <b>30</b>   | Deborah Barefoot,<br>Executive Director           |

### WEST KISH COFFEEHOUSE PRESENTS:

**Johnny Elliott** - Singer/Songwriter, Blues/Rock  
**Steve Schofield** - Singer/Songwriter, Blues/Jazz/Rock  
**Rob Whitekettle** - Singer/Songwriter, Country/Folk/Rock  
**Paul Sehnen** - classical guitar  
**Saturday October 18, 2008**  
**Show starts promptly at 7:00pm**  
 Call 717-935-5065 or e-mail at the address below for further information or directions

West Kish Coffeehouse  
[westkishch@embarqmail.com](mailto:westkishch@embarqmail.com)  
[www.westkish.org/coffeehouse.html](http://www.westkish.org/coffeehouse.html)

# KRISLUND KORNER

## THE EDITION OF FALL CHANGES

### 2009 Camp Schedule Focuses on Strengths & Variations!

More Mini Camps, additional Grandparent Camps (“Grand Camp”), and popular off-site trips for junior and senior highs are planned for next summer. NEW offerings include:

- Photography & Gospel Choir Camp, July 5-11; 6th-8th grades
- Shorter camps, ending on Friday, prior to July 4th holiday
- “Make Life Real” multi-day programs for youth groups; 6th-12th grades (more information below)

Beginning November 15th, the '09 schedule will be posted on our website ([www.krislund.org](http://www.krislund.org)) and online registrations will be possible. Brochures will be mailed to '07 and '08 campers and sent to each supporting church in November. Call to order a brochure (814.422.8878).

### MLR (Make Life Real): Camps for Youth Groups

MLR is a fully prepared, Christ-centered, fun-intensive, and team-growing experience at Krislund for youth groups (junior and senior high) and their leaders. Groups may choose a 3-night or 6-night experience. Camp provides good food; a packed schedule of adventure activities plus swimming, canoeing, & caving; Bible studies; bonfires; campouts; and lodging. Each group is responsible for providing 1 adult for every 5 youth (of the same sex) as counselors. It's like a group cruise without the boat, and lots more fun! The camp has materials to help you promote the experience among your youth and information to help parents, volunteers, and youth prepare.

### Church Mission Opportunity: Adopt a Week

Begin thinking now about adopting a summer camp week. Send 8 to 15 adult volunteers to work in the kitchen or on maintenance. It's a great way to grow closer as a congregation and to be part of an exciting ministry. For more information, contact the camp ([info@krislund.org](mailto:info@krislund.org)).

### Corts Depart

Steve and Robin Cort will be leaving at the end of the year to follow God's call. They are grateful for the opportunity to have served at Krislund for 13 years. A celebration of ministry will be held Sunday, Nov. 9, 3:00-5:00 in the Camp's Retreat Center. The Camp Committee is working prayerfully and diligently to secure new leadership, assuring an exciting summer ministry and a strong future for expanded ministry at Krislund.

## FUNDING THE FUTURE UPDATE

Pledges have reached \$1,775,000; 88% towards the goal of \$2,000,000. THANK YOU! One half of the land debt will be retired by December. Water treatment and infrastructure will be completed before the end of '08, preparing the way for the adult lodge. Design for the adult lodge is being revised by a team of industry professionals from our churches in order to meet expanded environmental impact requirements.

## PRESBYTERIAN HOMES ANNOUNCES ANNUAL HARVEST HOME OFFERING

In early October, each church within the Presbytery of Huntingdon will receive a bulletin insert to copy and distribute regarding our 2008 Harvest Home Offering. We also send a similar request for support to those individuals on our mailing list. This offering dates back to the early 1920's with local farmers delivering their crops to the Hollidaysburg Home to share with the residents. Unfortunately, today those “home grown gifts” are not allowed by state regulations, but support of our mission is still needed.

The purpose of the Harvest Home Offering is to receive gifts to continue our provision of charitable care to residents who have outlived their financial resources to pay for their care. While Medicare and Medicaid provide a part of the basic coverage a resident needs, the funding falls short of the costs involved. It is frightening to our residents when they see their carefully planned retirement savings dwindle and become depleted. Last year, we provided more than \$2.5 million in charitable care to those needing assistance

WE BELIEVE THAT  
AGING SHOULD  
REPRESENT A TIME OF  
ENJOYMENT AND NOT  
ONE FILLED WITH  
FINANCIAL ANXIETY.

within the four communities of Presbyterian Homes in the Presbytery of Huntingdon. In our 80 year history of caring for residents, we have never asked anyone to leave our Homes because they were unable to pay for the level of care they needed.

We believe that aging should represent a time of enjoyment and not one filled with financial anxiety. Because of the generosity of others, we are able to extend care to residents with limited resources.

We appreciate your faithful contributions, be it spiritual or financial, to the well-being of our residents. Our church families are such an important element in fulfilling the mission of the Presbyterian Homes. Please contact our office if you would prefer receiving a specific number of bulletin inserts and envelopes. The Mission Support office can be reached at (814) 693-4085. Please note the new office phone number.

### submitted by:

Dawn Garrity  
Mission Support  
Presbyterian Homes in the Presbytery of Huntingdon  
(814) 693-4086 (direct office)

# Agape Herald Editorial and Production Team

## 2008 Publication Sched-

Submission deadline:	Publication:
Jan. 18	Feb/March
March 21	April/May
May 16	June/July
July 18	Aug./Sept.
Sept. 19	Oct./Nov.
Nov. 14	Dec./Jan

*Agape Herald* is published by the Presbytery of Huntingdon. It is the responsibility of the Communications Subcommittee of the Administrative Umbrella Team.

### Editorial and Production Team:

Jill Sajeski ([alwwilson@verizon.net](mailto:alwwilson@verizon.net)) 814-669-5047  
 Peggy Kendall ([w\\_kendall@comcast.net](mailto:w_kendall@comcast.net)) 814-238-7875  
 Bill Conway ([4conways@comcast.net](mailto:4conways@comcast.net)) 814-342-5930  
 Jake Wagner ([jacobew@verizon.net](mailto:jacobew@verizon.net)) 717-543-5726  
 Sara Guy ([sguy@pennswoods.net](mailto:sguy@pennswoods.net)) 814-236-2658  
 Nancy Kraybill ([nwkraybill@yahoo.com](mailto:nwkraybill@yahoo.com)) 814-330-0621  
 Bob Himes ([blkpatch@embargmail.com](mailto:blkpatch@embargmail.com)) 717-667-9673  
 Chuck Hayes ([chayes@clearnet.net](mailto:chayes@clearnet.net)) 814-378-8162  
 Alice Meloy ([ammrem75@innernet.net](mailto:ammrem75@innernet.net)) 717-349-2685  
 Mary Frances Jaymes ([mfjaymes@yahoo.com](mailto:mfjaymes@yahoo.com)) 814-259-3256  
 Bill Croyle ([Larmstrong8@verizon.net](mailto:Larmstrong8@verizon.net))



Please send all information and potential articles/photos to Al Wilson - [alwwilson@verizon.net](mailto:alwwilson@verizon.net) or 1449 Curtin St., State College, PA 16803 by the submission deadline. We also need additional persons to serve on the Editorial Team which gathers information on congregational events, ministries and missions to share through the newsletter. Please contact Al if interested.



Agape Herald  
 Presbytery of Huntingdon  
 323 Main Street  
 Bellwood PA 16617

Non-Profit  
 Organization  
 U.S. Postage  
 Paid  
 Permit No. 26  
 Bellwood, PA  
 16617